

IP65 150W Laser Moving Head

User Manual



This manual contains important information.
Please read before operating fixture.

1 SECURITY TIPS

WARNING!!! To reduce the risk of fire, electric shock, or injury to persons, follow these important safety instructions:

- Non-professionals, not to disassemble the light arbitrarily and lighting accessories inside.
- Rated voltage range: AC110V-120V/60Hz or AC200V-240V / 50HZ (to be selected).
- Not beam irradiate the flammable materials, flammable materials and the lamp should be maintained at least 1M over the distance.
- Lamps used in ambient temperature: -15 °C-40 °C, the highest temperature of the surface of the lamp: 60 °C
- To keep away from the liquid substance and humid environment.
- Before using the lights must ensure the good grounding, can not install charging and remove any parts.
- The installation of lights, must be fixed screw fasteners with additional security cable and regular inspection.
- Lamps consecutive working hours is not recommended more than 10 hours.
- Should stop using the lights in time when happens unusual conditions during the process.
- Lamp parts of the rotation, external accessories and paste parts should be regular inspected, such as the emergence of loose and rock, should be reinforced in a timely manner to prevent the accident.
- Lamps adopt strong winds to refrigerate, it is easy to accumulate the dust, so you have to clean it weekly especially the cooling air opening, otherwise the dust will plug leading to poor light.

2 TECHNOLOGY DETAILS

Input: AC100v-240V 50/60HZ

Power Consumption:185w

Light source: 150w laser

Led life:20000Hrs

CTO: 5003K

CRI: Ra=59

Zoom angle:0.93

Working temperature: -10-40°C

Control mode:DMX512, Master-slave,Auto,RDM

Channel:20CH

Gobo wheel :29 gobos+white,With half color,Variable speed vibration and bidirectional rotation

Color wheel: 22 color+open,features halftone and linear adjustment functions

Cyan: 0-100%

Magenta: 0-100%

Yellow: 0-100%

Prism wheel 1: 8 prism,Can be rotated and stacked

Prism wheel 2: 3-layer prism(8+16+24),Can be rotated and stacked

Frost: 1 frost

Colorful: 1 colorful

Zoom: Motorised 8 or 16 bit

Dimmer:0-100% linear dimmer

Strobe:1-20Hz fast strobe per second, with pulse strobe, synchronous and asynchronous strobe effects

Pan movement: 540° 16bit

Tilt movement: 270° 16bit

Display: LCD display with 5 buttons

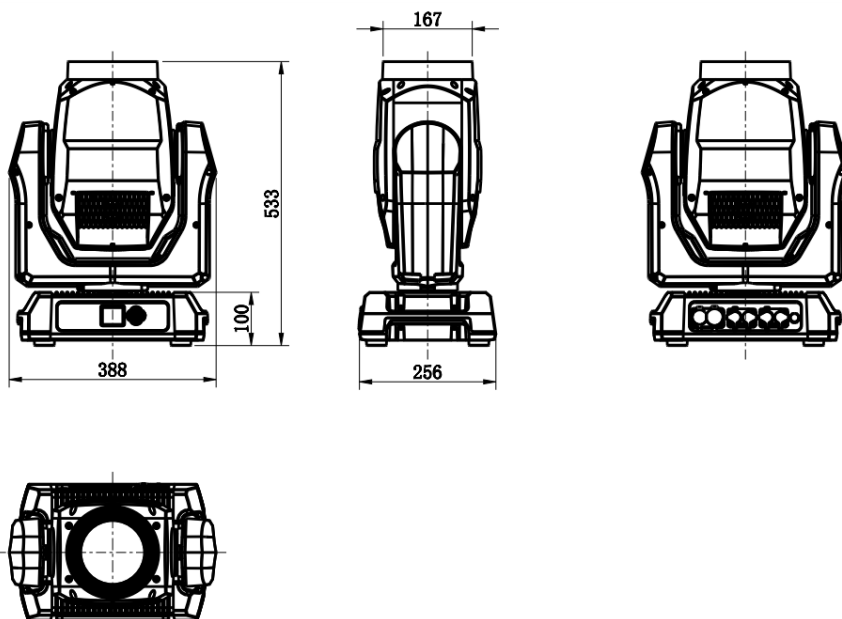
Cooling fan: Silence fan, speed changeable

Body: Die-Aluminum+Plastic

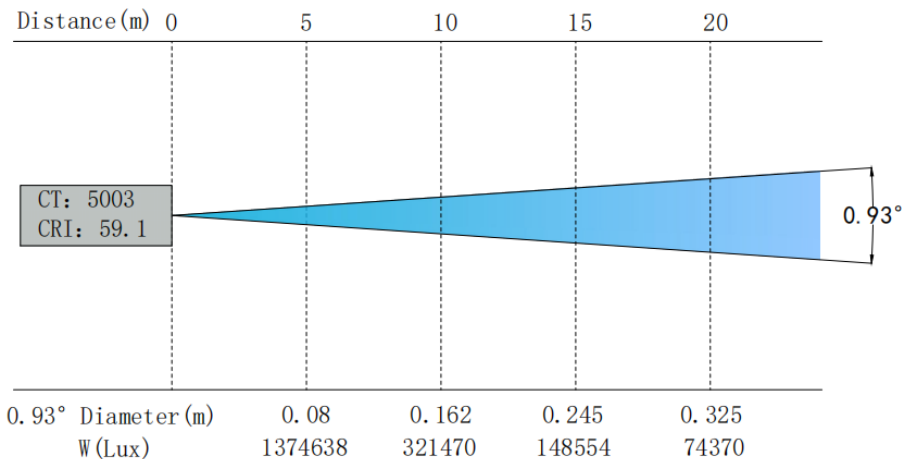
IP rate: IP65, waterproof

Signal Data: 3pin XLR in/out
Power connector: TRUE1 Powercon in/out
Product size: 388*256*533mm
Net weight: 19.5kg

Product dimension:



Illuminance:



3 Board Instruction

ADDR	001-512	
Channel mode	20CH	
Run mode	DMX/Manual/Auto	
Reset motor	Reset all/Func motor/Pan/Tilt	
DMX Manual	Pan	000-255
	Pan fine	000-255
	Tilt	000-255
	Tilt fine	000-255
	Pan/Tilt speed	000-255
	C	000-255
	M	000-255
	Y	000-255

	CTO	000-255
	Color	000-255
	Color static	000-255
	Prism 1	000-255
	Prism 2	000-255
	Prism rot	000-255
	Focus	000-255
	Frost/colorful	000-255
	Shutter	000-255
	Dimmer	000-255
	Auto exit	Never/300/180/120/90/60/40/30/20/10s ec
	Keep	YES/NO
Setting	Master	Master/slave
	Pan reverse	Yes/no
	Tilt reverse	Yes/no
	Pan range	Star/end
	Tilt range	Star/end
	X degree	500
	Y degree	500
	PT speed	Yes/no
	Lost signal	Dime off/keep
	Boot no DMX	DMX512/Auto/Manual/Middle
Auto master	Yes/no	
Adv setting	Fine adj	
	Language	Chinese/English
	Display setting	
	Fine adj assist	
	Recover setting	
Info	Code	
	Error	
	DMX moniter	

	Security	
	Light usage time	
	Device usage time	
	SV setting	
Test	Pan test	
	Ignore err	
	Bus state	
	Sensor states	
	MT output	
	Motor lost step	

4 DMX CHANNEL SHEET

20CH	Function	DMX value	Description
1	Pan	0-255	0-540°
2	Pan fine	0-255	0-2°
3	Tile	0-255	0-270°
4	Tile fine	0-255	0-1°
5	X/Y speed	0 - 255	From fast to slow
6	C	0 - 255	0-100%
7	M	0 - 255	0-100%
8	Y	0 - 255	0-100%
9	CTO	0 - 255	0-100%
10	Color wheel	0 - 13	Color 1 White
		14-24	Color 2

		25-35	Color 3
		36-46	Color 4
		47-57	Color 5
		58-68	Color 6
		69-79	Color 7
		80-90	Color 8
		91-101	Color 9
		102-112	Color 10
		113-123	Color 11
		124-134	Color 12
		135-145	Color 13
		146-156	Color 14
		157-167	Color 15
		168-178	Color 16
		179-189	Color 17
		190-200	Color 18
		201-211	Color 19
		212-222	Color 20
		223-233	Color 21
		234-244	Color 22
		245-255	Color 23
11	Static Gobo	0-1	Open
		2-3	Gobo 1
		4-5	Gobo 2
		6-7	Gobo 3
		8-9	Gobo 4
		10-11	Gobo 5
		12-13	Gobo 6
		14-15	Gobo 7
		16-17	Gobo 8
		18-19	Gobo 9

	20-21	Gobo 10
	22-23	Gobo 11
	24-25	Gobo 12
	26-27	Gobo 13
	28-29	Gobo 14
	30-31	Gobo 15
	32-33	Gobo 16
	34-35	Gobo 17
	36-37	Gobo 18
	38-39	Gobo 19
	40-41	Gobo 20
	42-43	Gobo 21
	44-45	Gobo 22
	46-47	Gobo 23
	48-49	Gobo 24
	50-51	Gobo 25
	52-53	Gobo 26
	54-55	Gobo 27
	56-57	Gobo 28
	58-59	Gobo 29
	60-64	Gobo1 shaking from slow to fast
	65-69	Gobo2 shaking from slow to fast
	70-74	Gobo3 shaking from slow to fast
	75-79	Gobo4 shaking from slow to fast
	80-84	Gobo5 shaking from slow to fast
	85-89	Gobo6 shaking from slow to fast
	90-94	Gobo7 shaking from slow to fast
	95-99	Gobo8 shaking from slow to fast
	100-104	Gobo9 shaking from slow to fast
	105-109	Gobo10 shaking from slow to fast
	110-114	Gobo11 shaking from slow to fast
	115-119	Gobo12 shaking from slow to fast

		120-124	Gobo13 shaking from slow to fast
		125-129	Gobo14 shaking from slow to fast
		130-134	Gobo15 shaking from slow to fast
		135-139	Gobo16 shaking from slow to fast
		140-144	Gobo17 shaking from slow to fast
		145-149	Gobo18 shaking from slow to fast
		150-154	Gobo19 shaking from slow to fast
		155-159	Gobo20 shaking from slow to fast
		160-164	Gobo21 shaking from slow to fast
		165-169	Gobo22 shaking from slow to fast
		170-174	Gobo23 shaking from slow to fast
		175-179	Gobo24 shaking from slow to fast
		180-184	Gobo25 shaking from slow to fast
		185-189	Gobo26 shaking from slow to fast
		190-194	Gobo27 shaking from slow to fast
		195-199	Gobo28 shaking from slow to fast
		200-204	Gobo29 shaking from slow to fast
		205-228	Gobo scrolls forward, from fast to slow
		229-231	Stop scrolls
		232-255	Gobo scrolls in reverse, from slow to fast
12	Prism1	0-127	No prism
		128-255	Prism 1 Insertion
13	Prism2	0-127	No prism
		128-255	Prism 2 Insertion
14	Prism positionin g and rotation	0-127	Prism position and rotation
		128-190	Prism rotates in reverse, from fast to slow
		191-192	Prism stops rotating
		193-255	Prism rotates forward, from slow to fast
11	Gobo rotation	0-127	0-360°
		128-191	Reverse flow from fast to slow
		192	Stop

		193-255	Forward flow from slow to fast
12	Rotation fine	000-255	0-100%
13	Prism	0-63	Remove prism
		64-127	Insert Prism 1
		128-191	Insert Prism 2
		192-255	Insert Prism 1 Prism 2
14	Prism1 rotation	0-20	0-360°
		21-127	Reverse flow
		128-191	Clockwis flow from fast to slow
		192-255	Counterclockwise flow from slow to fast
15	Zoom	000-255	0-100%
16	Frost/colorful	0-127	No function
		128-191	Frost
		192-255	Colorful
17	Strobe	0-3	Closed
		4-103	Strobe from slow to fast
		104-107	Open
		108-207	Turn on quickly and turn off slowly, from slow to fast
		208-212	Open
		213-251	Thunder strobe,from slow to fast
		252-255	Open
18	Dimmer	0-255	0-100%
19	Dimmer fine	0-255	0-100%
20	Reset	0-49	Blank
		50-100	Pan/Tilt reset
		101-200	Effect reset
		201-255	All reset

5 FIXED EQUIPMENT

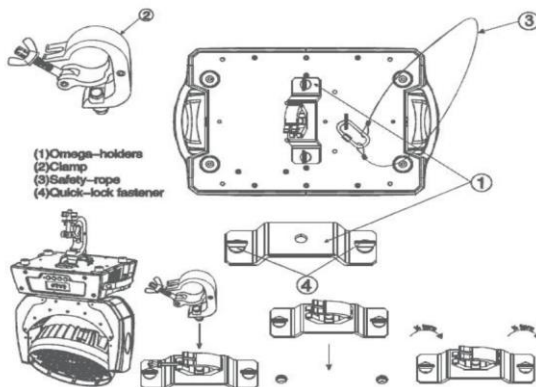
Please keep the equipment far away from the flammable objects like finishing material, etc. keep at least 0.5m distance from the flammable objects.

Warning: using two lamp clamps fix the equipment on the bottom of the lamp holder according to the instruction. to make sure the place of install the lamp is safe and suitable ,and the installation point that have chosen is safety and reliable.

The place of installing the lamp must support the 10 times weight of the lamp itself. And test the pensile place and make sure the place isn't out of the shape.

Must install the second protection when fixing the equipment like proper protective screening. The second protection is used to prevent drop off and lost of lamp and components.

Lamps can directly install the lamp holder , which is shown in the figure:



6 MAIN MACHINE CONNECTION

Please checking the power equipment supported.

Please put the plug of power source wire connect with the main power source .

(EU)Wire	Wire(America)	Direction of wire	General marks
Brown	Black	Live	L
Light blue	White	Neutral	N
Yellow/Green	Green	Earth	



Warranty Card

Name	Model
------	-------

Production	Purchase
------------	----------

End User
Company Name:
Add:

Sale Store	
Link man:	
Tel:	Stamp

Description: These must be truthfully fill, seal by the end-user and point-of-sale, or else the warranty will not work (warranty period and terms, see the following)

warranty period: one year since purchase warranty terms: 1、 If fail when using the product in normal state, you can made under the provisions of the warranty, show the warranty card and purchase bills(copy), and enjoy free maintenance service in a specific service center or the manufacturer.

2. The following will be the implementation of paid service:

(1)Without the effective warranty card

- (2) There's blank, alter and no point-of-sale name
- (3) Fail caused by unresistance
- (4) Fail caused by transportation or unloading
- (5) Fail caused by not operate by manual
- (6) Fail caused by disassemble without unauthorized
- (7) Fail caused by using the unauthorized control system

Note:

Based on our company continue to improve the product, the statement containing data may have changed, and will not notice the change any more. Company retains its right to change specifications related when product is improved. Thanks for your understanding.